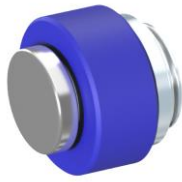


SLIDE ROLLER

- Slide Roller type rail to ease the thrust/tensile force
- self-clinching installation type-press in/ flare in
- roller type rail, flexible rail design in limited space
- plastic rollers are available

SLIDE ROLLER-Plastic type

Patented.



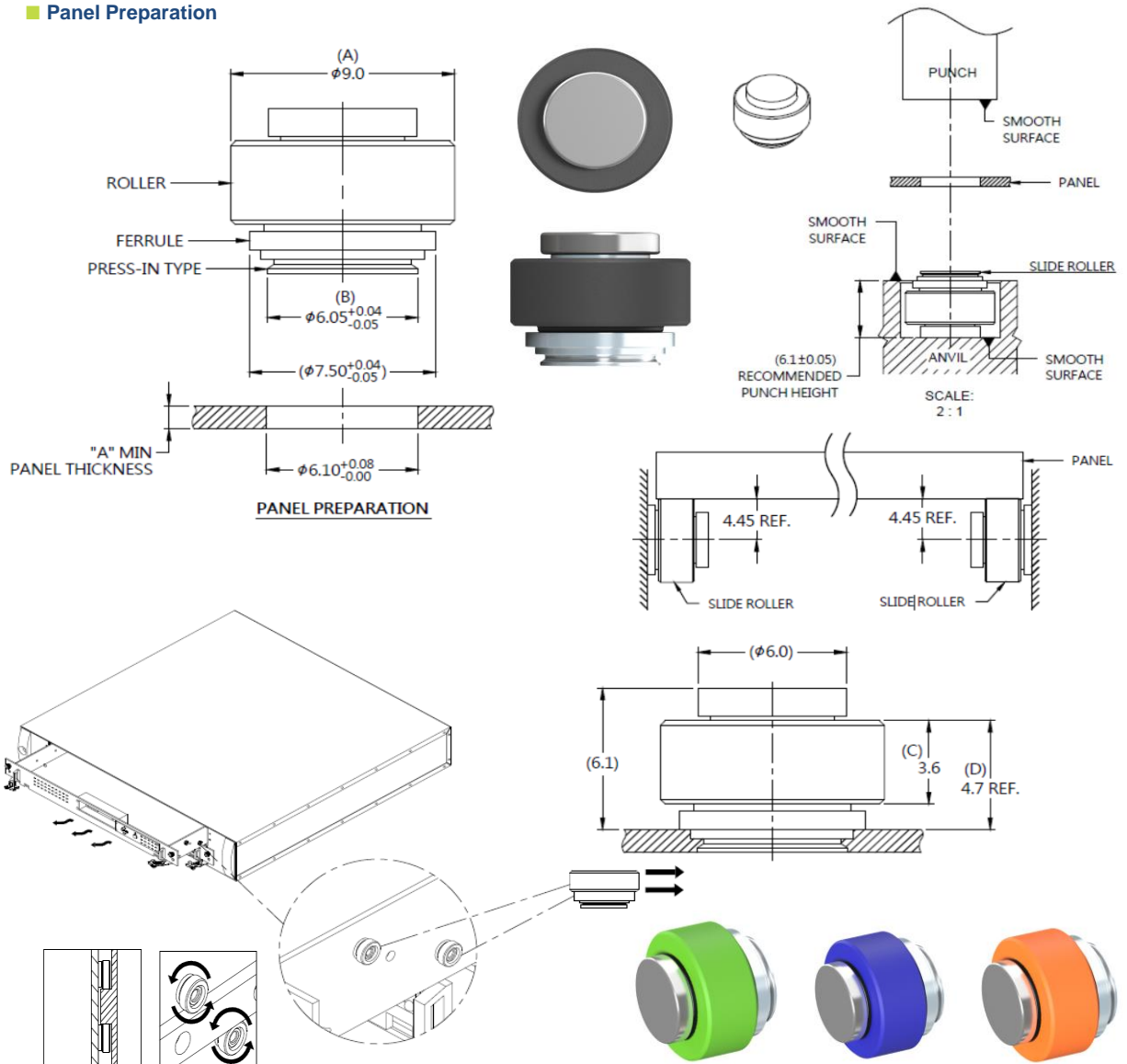
Material and Finish

ROLLER :
PLASTIC: PANTONE (BLUE).

RIVET :
300 SERIES STAINLESS STEEL , NATURAL FINISH.

FERRULE :
CARBON STEEL , ZINC FINISH.

Panel Preparation



Dimensions (mm)

SCREW LENGTH "T"	SCREW PROJECTION		PANEL THICKNESS		DIMENSINOS	
	"P-1"	"P-2"	"A" MIN	"A" MAX	"L"	"B"
~	~	~	1.0	~		

Copyright© Since 2007-2019 Fivetechnology Inc. All Right Reserved.